

**WARREN
RUPP®**

Quality System
ISO9001 Certified

Environmental
Management System
ISO14001 Certified

IDEX
FLUID & METERING



SANDPIPER®
A WARREN RUPP PUMP BRAND

**BALL VALVE
SSB2-A TYPE 3**

**2" x 2 1/2" Air-Powered
Double-Diaphragm
Sanitary Pump**

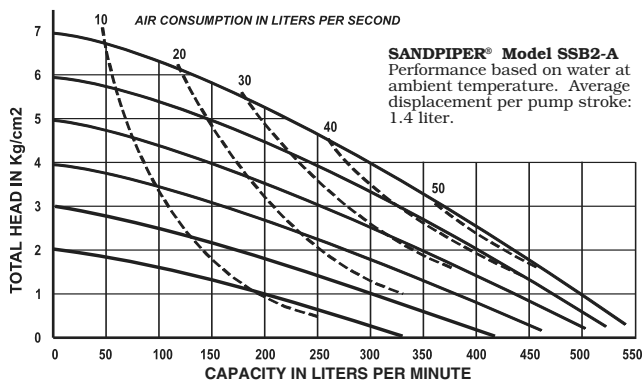
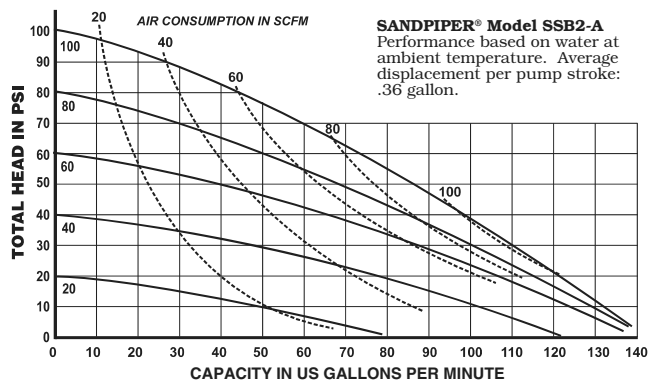
ENGINEERING, PERFORMANCE
& CONSTRUCTION DATA

INTAKE/DISCHARGE PIPE SIZE	CAPACITY	AIR VALVE	SOLIDS-HANDLING	HEADS UP TO
Suction: 2 1/2" Sanitary Process Clamp Fitting Discharge: 2" Sanitary Process Clamp Fitting	0 to 125 gallons per minute (0 to 473 liters per minute)	No-lube, no-stall design	1/4" (6mm)	125 psi or 289 ft. of water (8.8 Kg/cm ² or 88 meters)

PERFORMANCE CURVES

(SANDPIPER® pumps are designed to be powered only by compressed air)
Temperature Limit: 212°F - 100°C MAXIMUM

This pump is USDA-Accepted for meat and poultry.



MATERIALS OF CONSTRUCTION

SSB2-A Type 3	Manifold	Outer Chamber	Inner Chamber	Outer Diaphragm Plate	Inner Diaphragm Plate	Intermediate Housing	Diaphragm Rod	Valve Seat	Hardware	Diaphragm	Ball Valve Material	Air Valve	Shipping Weight (lbs)
TF-3-SS	316SS	CF8M†	AL356-T6◊	CF8M†	AL380DC	356-T6AL◊	416SS	FDA-N	302/304SS	FDA-N	FDA-N	AL356-T6◊	120
TD-3-SS	316SS	CF8M†	AL356-T6◊	CF8M†	AL380DC	356-T6AL◊	416SS	FDA-N	302/304SS	D	D	AL356-T6◊	120

Meanings of Abbreviations:

† = Electropolished
◊ = Electroless Nickel Plated
AL = Aluminum
D = FDA Accepted Santoprene

DC = Die Cast
FDA-I = Food Grade EPDM
FDA-N = Food Grade Nitrile

PP = Polypropylene-Glass Filled
SS = Stainless Steel

ssb2dl3ds-REV0508

Tel: 866-777-6060
Fax: 866-777-6383

Springer Pumps, LLC
Sandpiper Maintenance Videos: <https://goo.gl/Vn9Gdt>

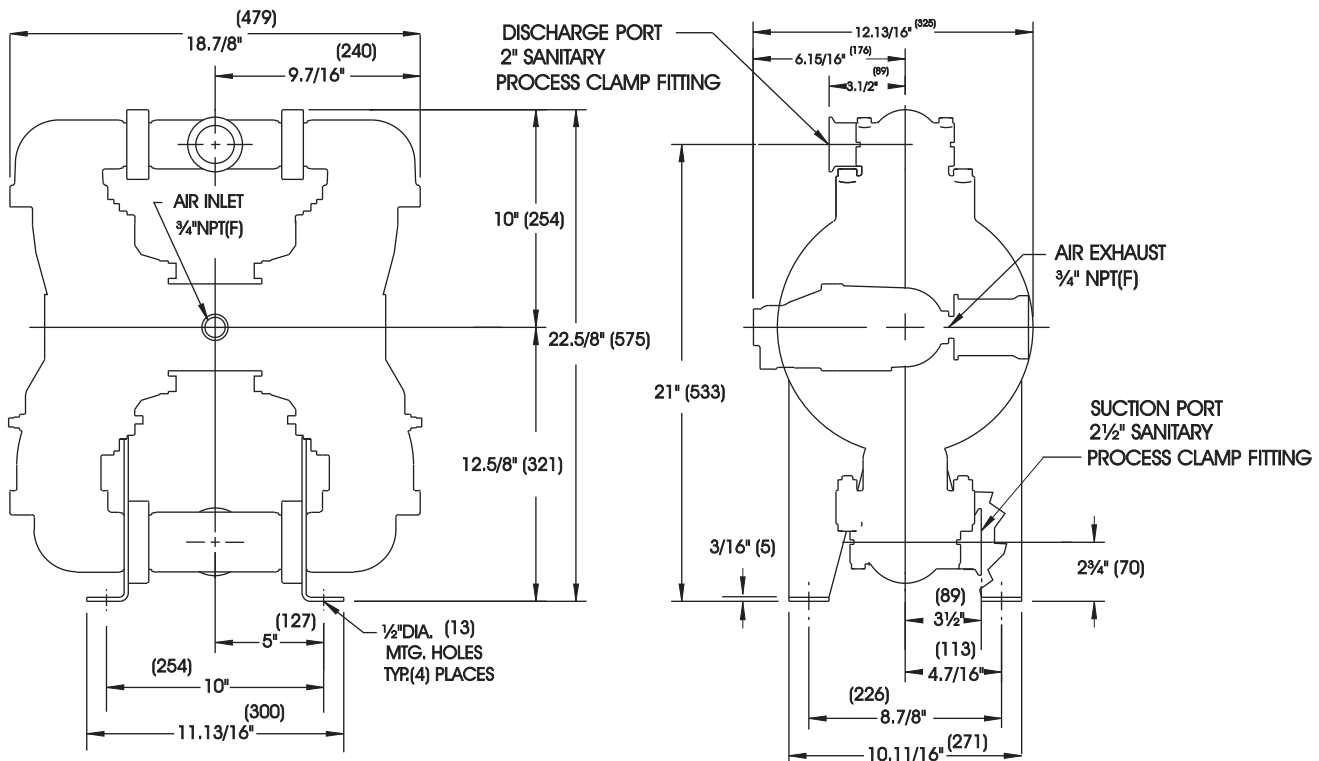
www.springerpumps.com
Int'l: +001 267 404 2910

SSB2-A BALL VALVE SANITARY



MATERIALS	Operating Temperatures	
	Maximum	Minimum
FDA Accepted NITRILE General purpose, oil-resistant. Shows good solvent, oil, water and hydraulic fluid resistance. Should not be used with highly polar solvents like acetone and MEK, ozone, chlorinated hydrocarbons and nitro hydrocarbons.	190°F 88°C	-10°F -23°
FDA Accepted EPDM Shows very good water and chemical resistance. Has poor resistance to oil and solvents, but is fair in ketones and alcohols.	212°F+ 100°C	-10°F -23°
CF8M Stainless Steel equal to or exceeding ASTM specification A743 for corrosion resistant iron chromium, iron chromium nickel, and nickel based alloy castings for general applications. Commonly referred to as 316 Stainless Steel in the pump industry.		
For specific applications, always consult the Warren Rupp "Chemical Resistance Chart"		

Dimensions are ± 1/8"
 Figures in parenthesis = millimeters



SUCTION 2 1/2" QUICK CONNECT SANITARY PROCESS CLAMP FITTINGS
DISCHARGE 2" QUICK CONNECT SANITARY PROCESS CLAMP FITTINGS
3/4" NPT (F) AIR INLET PORT • 3/4" NPT (F) AIR EXHAUST PORT

Copyright© 2008 Warren Rupp, Inc. All rights reserved.

Specifications are subject to improvement without notice.

SANDPIPER® is a registered trademark of Warren Rupp, Inc.

Warren Rupp, Inc.

• A Unit of IDEX Corporation

ssb2dl3ds-REV0508

Tel: 866-777-6060
 Fax: 866-777-6383

Springer Pumps, LLC
 Sandpiper Maintenance Videos: <https://goo.gl/Vn9Gdt>

www.springerpumps.com
 Int'l: +001 267 404 2910